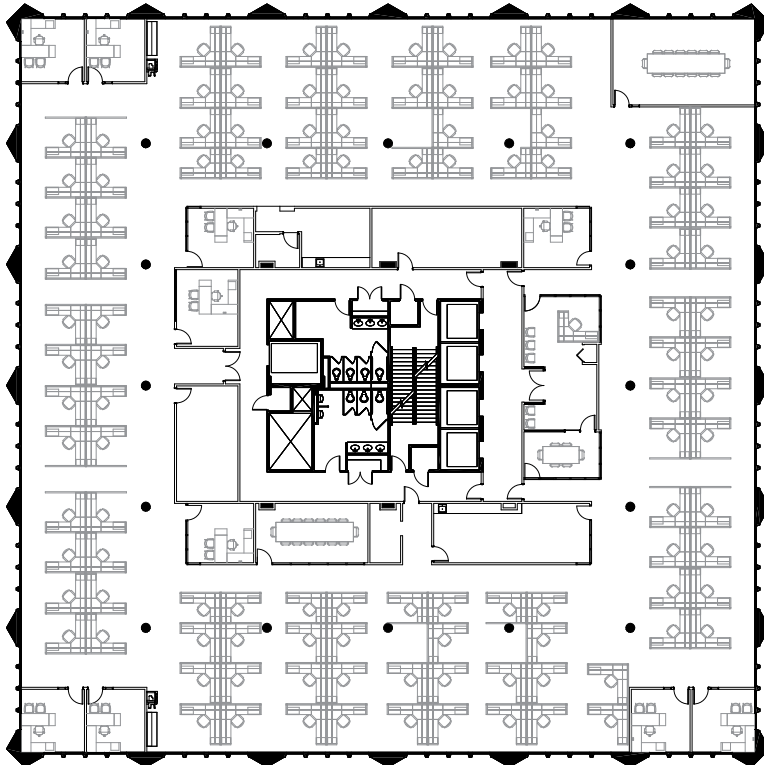




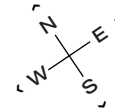
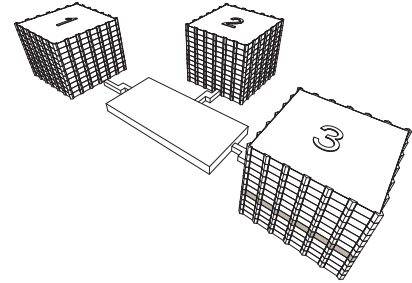
TOWER 3 - SUITE 500

23,682 RSF



CONTINENTAL TOWERS

1701 Golf Rd
Rolling Meadows, IL



VIRTUAL TOUR →

LEASING

Bill Saviski
Managing Director
bsaviski@glenstar.com
773 837 5290

—

Christian Domin
Managing Director
cdomin@glenstar.com
312 925 6304

CONTINENTAL-TOWERS.COM

PROPERTY HIGHLIGHTS

- **Three, Class A office buildings totaling 910,000 SF**
- **\$28 million renovation completed in 2020**
- **Over 1 acre of outdoor landscaped terraces**
- **New lobbies, corridors, game room and tenant lounge**
- **23,000 SF health club**
- **Highway access from two 4-way interchanges**
- **WiredScore Platinum certification**

SUITE FEATURES

- Conceptual turnkey plan
- Part of a contiguous block up to 59,595 RSF
- Prebuilt corner and interior offices for more efficient fitout
- 106 workstations
- 1 perimeter and 2 interior conference rooms
- 2 kitchens
- Glass entry doors
- Reception open to deck
- Views of the forest preserve