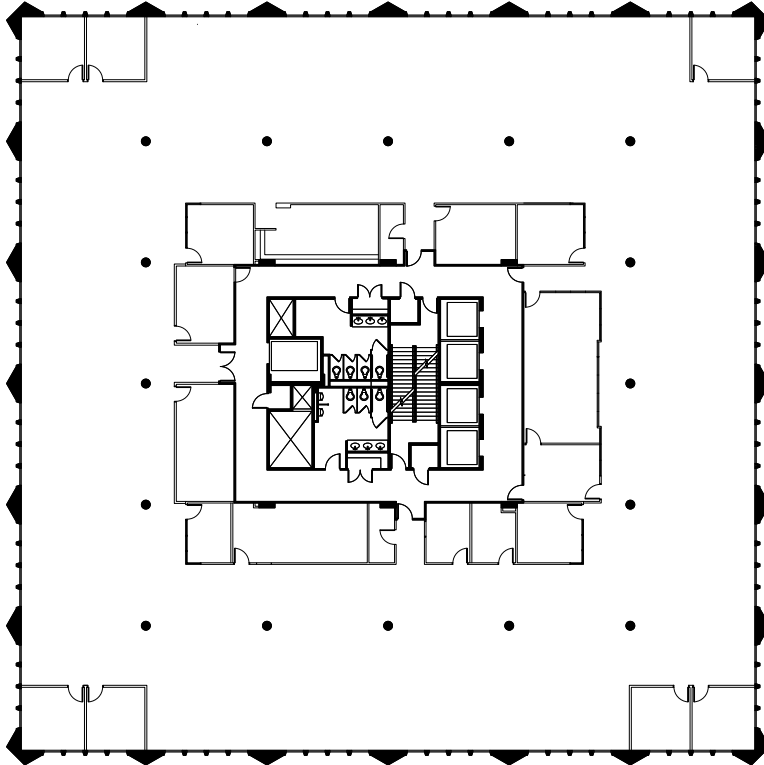




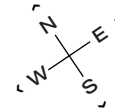
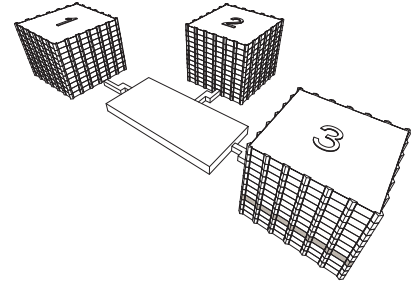
TOWER 3 - SUITE 400

# 23,682 RSF



## CONTINENTAL TOWERS

1701 Golf Rd  
Rolling Meadows, IL



### LEASING

**Bill Saviski**  
Managing Director  
bsaviski@glenstar.com  
773 837 5290

—

**Christian Domin**  
Managing Director  
cdomin@glenstar.com  
312 925 6304

[CONTINENTAL-TOWERS.COM](http://CONTINENTAL-TOWERS.COM)

### PROPERTY HIGHLIGHTS

- Three, Class A office buildings totaling 910,000 SF
- \$28 million renovation completed in 2020
- Over 1 acre of outdoor landscaped terraces
- New lobbies, corridors, game room and tenant lounge
- 23,000 SF health club
- Highway access from two 4-way interchanges
- WiredScore Platinum certification

### SUITE FEATURES

- Full floor opportunity
- Part of a contiguous block up to 59,595 RSF
- Prebuilt corner and interior offices for more efficient fitout
- Open area for workstations
- 2 conference rooms
- 2 kitchen/break rooms
- Views of the forest preserve