

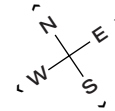
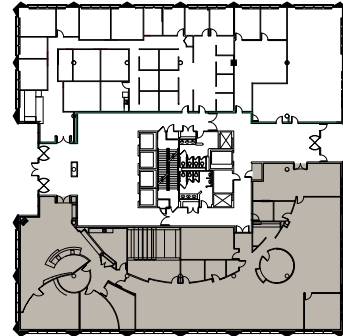
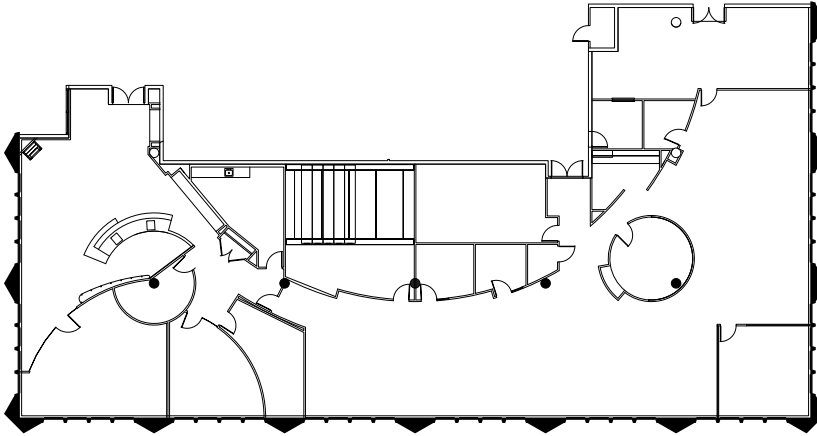


TOWER 1 - SUITE 100

11,005 RSF

CONTINENTAL TOWERS

1701 Golf Rd
Rolling Meadows, IL



LEASING

Bill Saviski
Managing Director
bsaviski@glenstar.com
773 837 5290

—

Christian Domin
Managing Director
cdomin@glenstar.com
312 925 6304

CONTINENTAL-TOWERS.COM

PROPERTY HIGHLIGHTS

- **Three, Class A office buildings totaling 910,000 SF**
- **\$28 million renovation completed in 2020**
- **Over 1 acre of outdoor landscaped terraces**
- **New lobbies, corridors, game room and tenant lounge**
- **23,000 SF health club**
- **Highway access from two 4-way interchanges**
- **WiredScore Platinum certification**

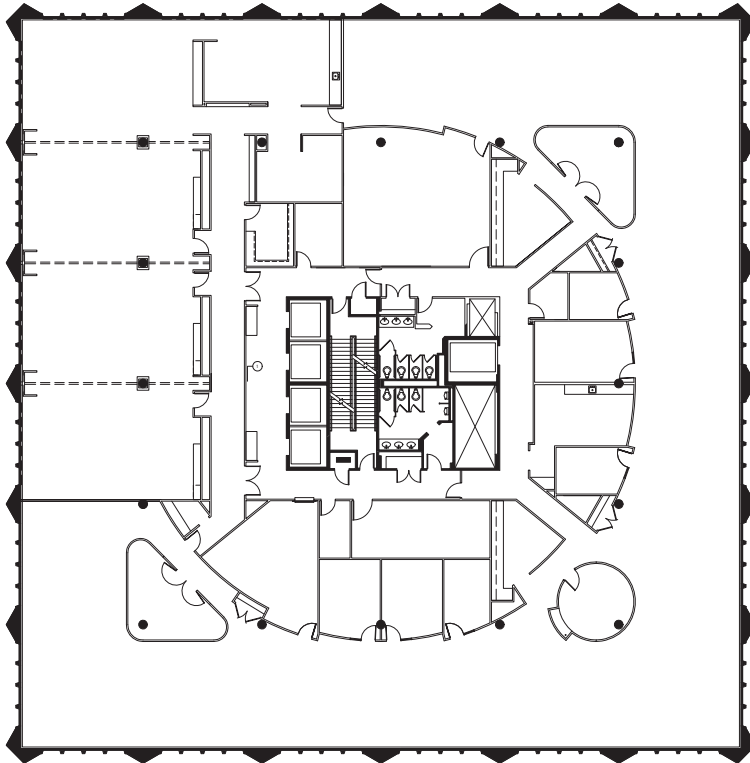
SUITE FEATURES

- High-visibility ground level suite with excellent signage opportunity
- Directly adjacent to recently renovated building lobby
- Part of a contiguous block up to 105,000 RSF
- Top-of-building signage opportunity providing excellent visibility from I-90 and the surrounding area



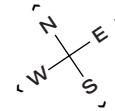
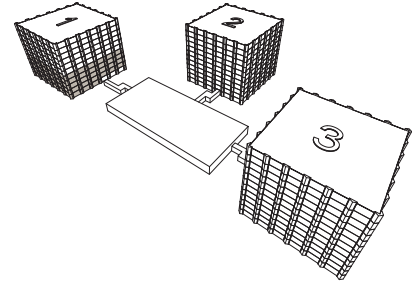
TOWER 1 - SUITE 200

23,608 RSF



CONTINENTAL TOWERS

1701 Golf Rd
Rolling Meadows, IL



LEASING

Bill Saviski
Managing Director
bsaviski@glenstar.com
773 837 5290

—

Christian Domin
Managing Director
cdomin@glenstar.com
312 925 6304

CONTINENTAL-TOWERS.COM

PROPERTY HIGHLIGHTS

- **Three, Class A office buildings totaling 910,000 SF**
- **\$28 million renovation completed in 2020**
- **Over 1 acre of outdoor landscaped terraces**
- **New lobbies, corridors, game room and tenant lounge**
- **23,000 SF health club**
- **Highway access from two 4-way interchanges**
- **WiredScore Platinum certification**

SUITE FEATURES

- Full floor opportunity
- Part of a contiguous block up to 105,000 RSF
- Top-of-building signage opportunity providing excellent visibility from I-90 and the surrounding area
- Views of the forest preserve

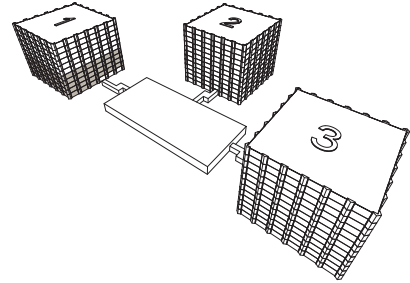
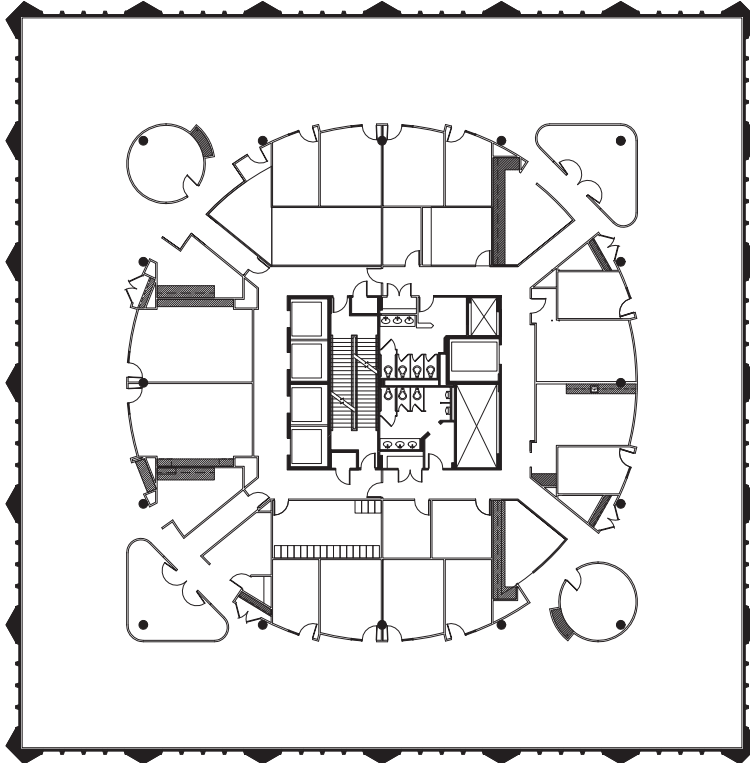


TOWER 1 - SUITE 300

23,608 RSF

CONTINENTAL TOWERS

1701 Golf Rd
Rolling Meadows, IL



LEASING

Bill Saviski
Managing Director
bsaviski@glenstar.com
773 837 5290

—

Christian Domin
Managing Director
cdomin@glenstar.com
312 925 6304

CONTINENTAL-TOWERS.COM

PROPERTY HIGHLIGHTS

- Three, Class A office buildings totaling 910,000 SF
- \$28 million renovation completed in 2020
- Over 1 acre of outdoor landscaped terraces
- New lobbies, corridors, game room and tenant lounge
- 23,000 SF health club
- Highway access from two 4-way interchanges
- WiredScore Platinum certification

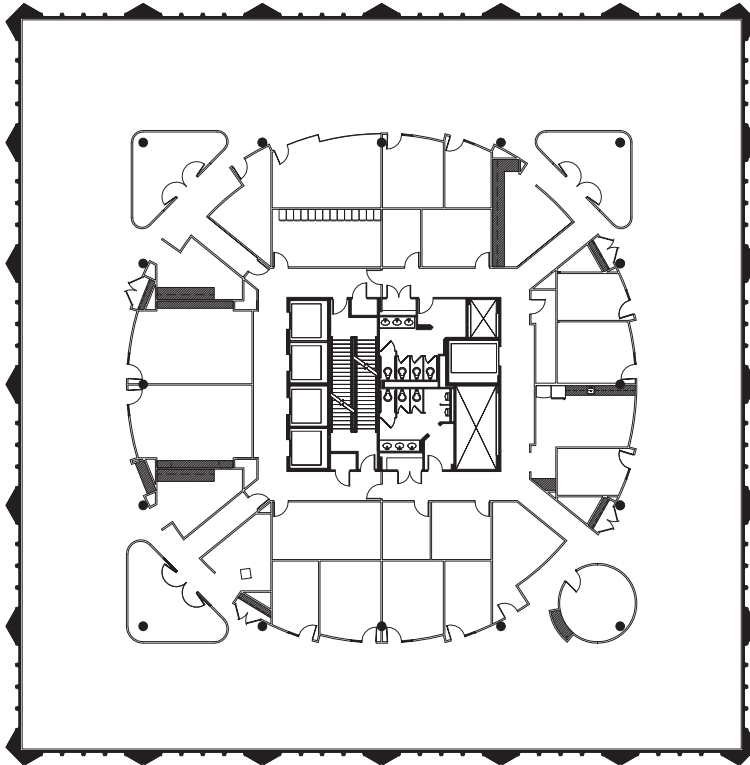
SUITE FEATURES

- Full floor opportunity
- Part of a contiguous block up to 105,000 RSF
- Top-of-building signage opportunity providing excellent visibility from I-90 and the surrounding area
- Views of the forest preserve



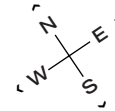
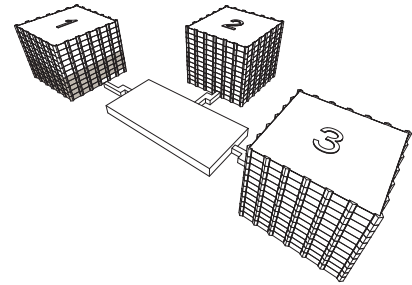
TOWER 1 - SUITE 400

23,608 RSF



CONTINENTAL TOWERS

1701 Golf Rd
Rolling Meadows, IL



LEASING

Bill Saviski
Managing Director
bsaviski@glenstar.com
773 837 5290

—

Christian Domin
Managing Director
cdomin@glenstar.com
312 925 6304

CONTINENTAL-TOWERS.COM

PROPERTY HIGHLIGHTS

- **Three, Class A office buildings totaling 910,000 SF**
- **\$28 million renovation completed in 2020**
- **Over 1 acre of outdoor landscaped terraces**
- **New lobbies, corridors, game room and tenant lounge**
- **23,000 SF health club**
- **Highway access from two 4-way interchanges**
- **WiredScore Platinum certification**

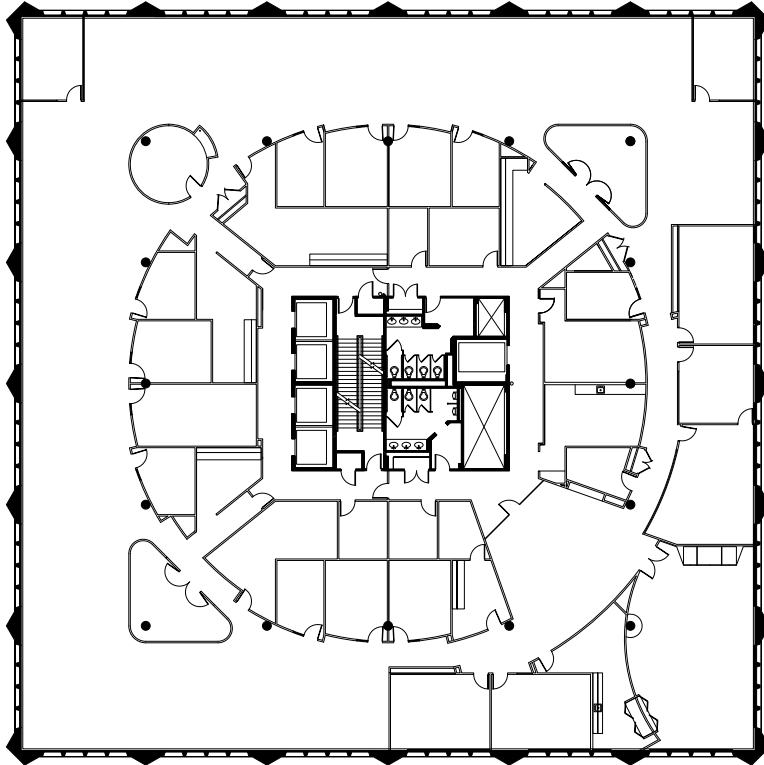
SUITE FEATURES

- Full floor opportunity
- Part of a contiguous block up to 105,000 RSF
- Top-of-building signage opportunity providing excellent visibility from I-90 and the surrounding area
- Views of the forest preserve



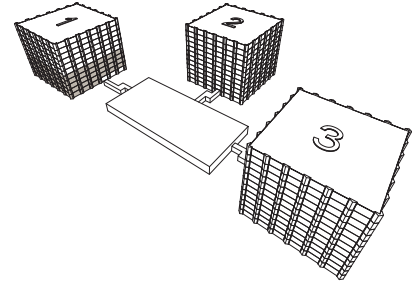
TOWER 1 - SUITE 500

23,608 RSF



CONTINENTAL TOWERS

1701 Golf Rd
Rolling Meadows, IL



LEASING

Bill Saviski

Managing Director

bsaviski@glenstar.com

773 837 5290

—

Christian Domin

Managing Director

cdomin@glenstar.com

312 925 6304

CONTINENTAL-TOWERS.COM

PROPERTY HIGHLIGHTS

- **Three, Class A office buildings totaling 910,000 SF**
- **\$28 million renovation completed in 2020**
- **Over 1 acre of outdoor landscaped terraces**
- **New lobbies, corridors, game room and tenant lounge**
- **23,000 SF health club**
- **Highway access from two 4-way interchanges**
- **WiredScore Platinum certification**

SUITE FEATURES

- Full floor opportunity
- Part of a contiguous block up to 105,000 RSF
- Top-of-building signage opportunity providing excellent visibility from I-90 and the surrounding area
- Views of the forest preserve